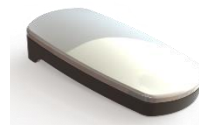


ELS100 / ELS101 - Electronic Leak Sensor

- Multi contact sensor detects moisture, leak, flood and water leak levels
- Sensors wirelessly report data to end-users, to gateways and to the cloud for monitoring and analysis
- Generate alarms, send text messages, close valves and track historic data
- Cloud configurable through mobile apps, PC interfaces



ELS100



ELS101



Distinguishing and Unique Features

- The smallest and most powerful water leak sensor on the market today
- Multiple contact leak sensing (ELS101) ensures detection accuracy over a range of conditions
- Multiple sensitivity / thresholds define events and minimize nuisance alarms
- Simple installation process
- Can be installed and activated / deactivated remotely
- Operational battery life of 10 years
- Automatically recognizes a user's self-test activity
- Child & Fool Proof

Applications & Benefits

- Smart building applications to detect and prevent catastrophic flooding
- Reduce insurance premiums
- Home owner asset protection
- Automatically activate sump pumps
- Shut off water supply lines automatically based on moisture, leak and flood detection levels
- Parking lot flood detection early warning system
- Roof leak moisture detection
- Marine and boat applications
- Cottage / summer home remote monitoring
- Condominiums, commercial buildings, hospitals, hotels, restaurants, schools, homes, retail etc.
- Alleviate Quality of Life and Business Disruptions

About the Sensor

- Easily installed under sinks, behind toilets, in machine rooms, HVAC systems, basements etc.
- Data reporting on exception, with heartbeat reporting every 6 hours.
- Settable sensing parameters, moisture, leak and flood timing thresholds
- Settable measurement intervals (temperature) granularity and settable reporting intervals (latency), - moisture, leak and flood sensing is continuous
- Advanced features and continuous system diagnostics provides unparalleled performance
- Built in buzzer alarm and LED

Specifications

- ELS100 — 1.9" x 1.0" x .5" (48 x 25 x 13mm)
- ELS101 — 2.5" x 1.2" x .7" (63 x 31 x 18mm)
- Weight — 1.8 / 2.1 oz (51 / 60g.)
- 900 MHz band in NA, 868 band in EU
- 2400, 4800 and 9600 on air baud rate
- Standard CR2450 / CR2032 button cell battery
- Line of Sight (LOS) range ~ 600m (3/8 mile)
- Indoor range 165ft — 400ft (50m — 125m)
- 256 bit AES encryption with secure bootloader
- Remote OTA programming & parameter updates
- Collocates with WiFi, Bluetooth, Cellular, LoRa, ZigBee and many other wireless standards

Z3 Controls Inc.

4261-A14 Hwy 7 - Unit 290

Markham, Ontario, Canada, L3R 9W6

Tel: 1 877 454-4436

sales@z3controls.com Contact: mikez@z3controls.com

www.z3controls.ca